



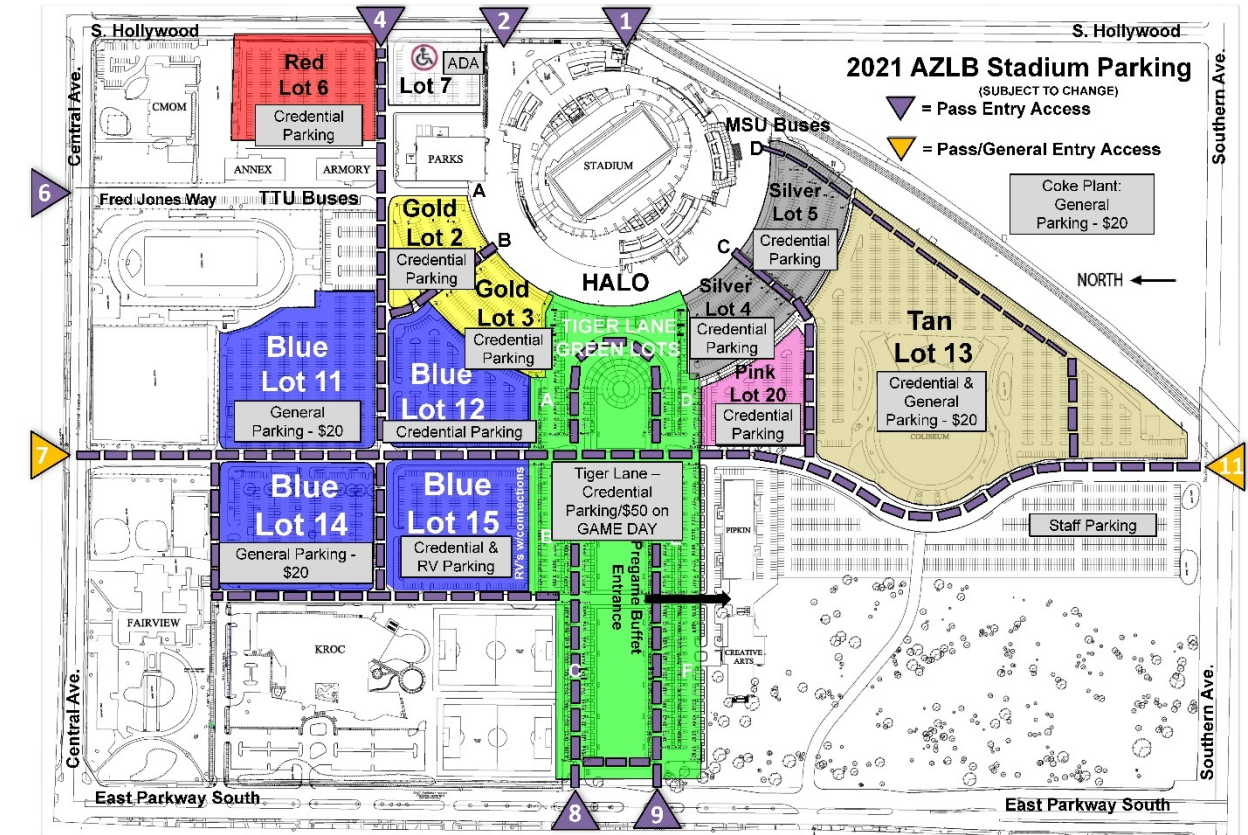
## 63<sup>rd</sup> AutoZone Liberty Bowl

### PARKING INFORMATION



Mississippi State Bulldogs vs. Texas Tech Red Raiders

Tuesday, December 28<sup>th</sup>, 2021



### Stadium Parking Lots

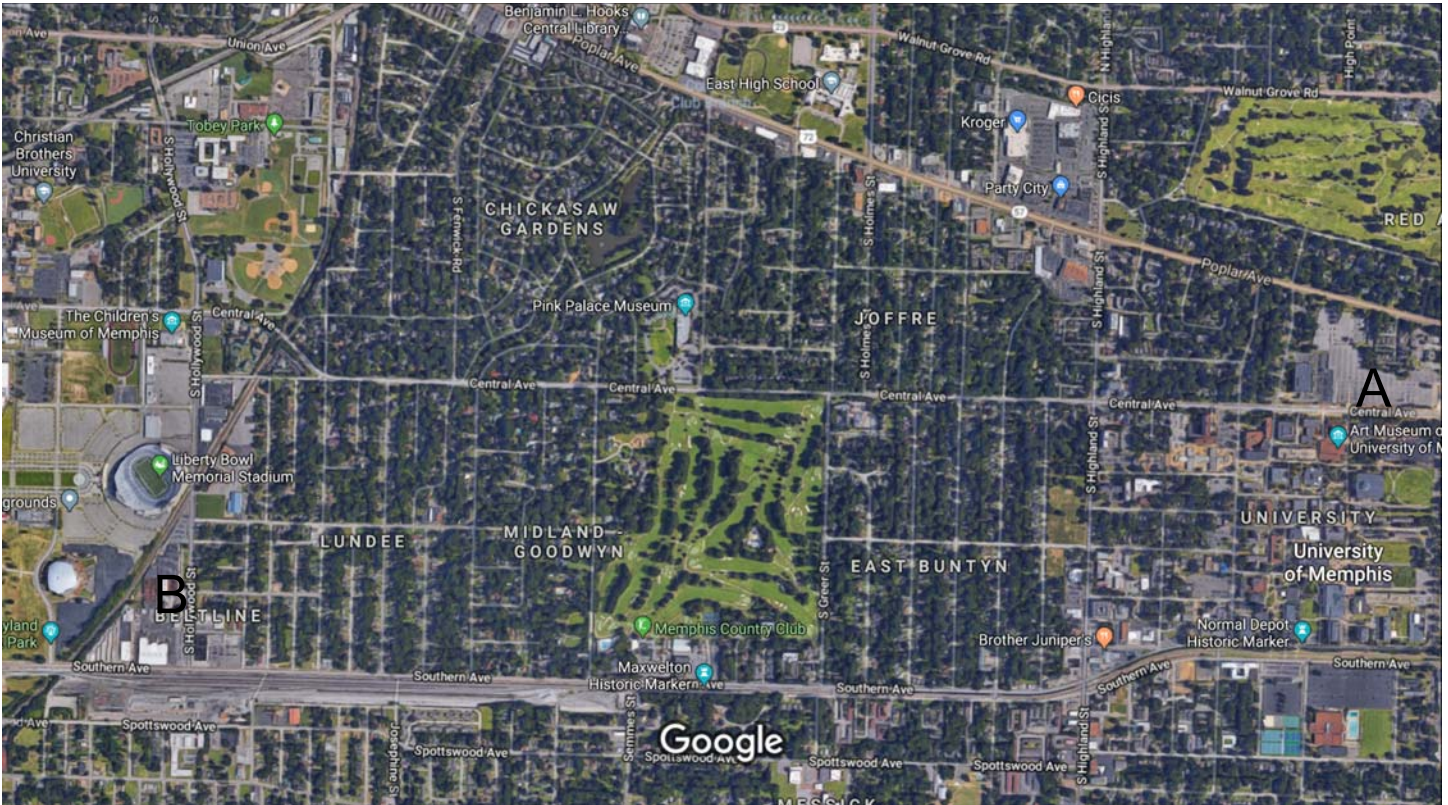
- All Stadium parking lots open on Game Day at 10:00am
- Please see map and check back of parking pass for Access Point Entry for Pass Lots
- Parking Pass Holders are reminded to have their passes displayed on their dash board/hung from rear view mirror prior to arrival at the Stadium parking lots
- ADA Lot is first come, first serve to patrons with ADA placard. Please show upon entry.
- General Parking (CASH ONLY) will be available in the following lots:
  - Tiger Lane (\$50) with dedicated tailgating space and power services: enter at Access 9 (East Parkway and Tiger Lane South)
  - Blue Lot 11 and Blue Lot 14 (\$20/\$80 for RVs): enter at Access 7 (Central Ave. and Early Maxwell)
  - Tan Lot (\$20/\$80 for RVs/Buses): enter at Access 11 (Southern Ave. and Early Maxwell)

### **Park-N-Ride Shuttles (see attached Map)**

- The City of Memphis is offering Park-N-Ride Shuttle Service to the Stadium from the University of Memphis campus. The service includes free parking and round-trip shuttle service to and from the stadium for \$5 per person. Shuttles are cash only.
- Fans interested in shuttle service can park in the University's Central Avenue parking lot (3700 Central Avenue, between the Holiday Inn parking lot and the Scheidt School of Music) and access the shuttles, which will begin at 1:30 p.m. and run continuous routes until one hour after the game concludes.
- Drop-off and Pick-up location at the Stadium will be located at the Coca-Plant Office at 499 S. Hollywood)

### **Off-Site Parking Locations (see attached Map)**

- Coca-Cola Lot, entrance on S. Hollywood Street just north of Southern Avenue
  - Opens at 10am, Tailgating NOT permitted
  - \$20 cash-only, per space
  - RVs and Buses are permitted, must pay per space used
- Tobey Park, entrances on Central Avenue and S. Hollywood Street
  - Opens at 10am, Tailgating permitted
  - \$15 cash-only, per space
  - RVs and Buses are NOT permitted
- Christian Brothers University, lot entrance at Central Ave. and Early Maxwell.
  - Opens at 11:00am, Tailgating permitted
  - \$20 cash-only, per space
  - RVs and Buses are NOT permitted
- Fairview Complex (Maxine Smith Steam Academy & Middle College School), lot entrances on Central between East Parkway and Early Maxwell
  - Opens at 12:00pm, Tailgating NOT permitted
  - \$20 cash-only, per space
  - RVs and Buses are NOT permitted
- Shelby County School Board, lot entrance at 160 South Hollywood St
  - Opens at 8:00am, Tailgating NOT permitted
  - \$20 cash-only, per space
  - RVs and Buses are NOT permitted



1000 ft

## PARK-N-RIDE SHUTTLE SERVICE

*Shuttles would depart UofM and travel Central Ave. to Goodwyn, Goodwyn to Midland, and Midland to S. Hollywood St.*

A: UofM Central Lot & Connely Lots

B: Coca-Cola Bottling Plant/Drop-off & Pick-Up Location



## OFF CAMPUS LOT LOCATIONS

A: Coca-Cola Plant

B: Tobey Park

C: Shelby County School Board

D: CBU

E: Maxine Smith STEAM Academy