



64th AutoZone Liberty Bowl

GAMEDAY INFORMATION



Kansas Jayhawks vs. Arkansas Razorbacks

Wednesday, December 28th, 2022

Schedule

- Stadium Parking Lots open at 9:00am
- Pre-Game Buffet at Pipkin & Creative Arts Buildings opens at 1:00pm
- Pre-game Buffet purchased tickets for Kansas are located in the Pipkin Building, and purchased tickets for Arkansas are located in the Creative Arts Building (see site plan below)
- Media Entrance opens at 1:30pm
- Stadium Gates open at 2:30pm
- Kick-Off is at 4:30pm

Seating Locations

- Kansas sections located on WEST SIDE of Stadium: enter at Gates 2, 3 & 4
- Arkansas sections located on EAST SIDE of Stadium: enter at Gates 1, 5 & 6

Ticket and Will Call Locations

- Ticket Sales/Will Call opens at 9:00am in the Stadium Office
- Ticket Sales/Will Call will switch to Stadium Gate 1 at 12pm
- General AutoZone Liberty Bowl Will Call is located at the Gate 1 Ticket Office
- Kansas Will Call/Player-Guest Pick-up is located at the Gate 4 Ticket Office
- Arkansas Will Call/Player-Guest Pick-up is located at the Gate 6 Ticket Office

Safety & Security

- All persons entering the stadium will go through metal detector screenings
- Stadium's Clear Bag Policy will be enforced

Stadium Parking Lots

- All Stadium parking lots open on Game Day at 10:00am
- Please see map and check back of parking pass for Access Point Entry for Pass Lots
- Parking Pass Holders are reminded to have their passes displayed on their dash board/hung from rear view mirror prior to arrival at the Stadium parking lots
- ADA Lot is first come, first serve to patrons with ADA placard. Please show upon entry.
- General Parking (CASH or CREDIT) will be available in the following lots:
 - Tiger Lane (**\$50**) with dedicated tailgating space and power services: enter at Access 9 (East Parkway and Tiger Lane South)
 - Blue Lot 14 (**\$30/\$100 for RVs**): enter at Access 7 (Central Ave. and Early Maxwell)
 - Tan Lot and MSEC Parking (**\$30/\$100 for RVs/Buses**): enter at Access 11 (Southern Ave. and Early Maxwell)

Park-N-Ride Shuttles

- The City of Memphis is offering Park-N-Ride Shuttle Service to the Stadium from the University of Memphis campus. The service includes free parking and round-trip shuttle service to and from the stadium for \$10 per person. Shuttles are cash only.
- Fans interested in shuttle service can park in the University's Central Avenue parking lot (3750 Central Avenue, between the Holiday Inn parking lot and the Scheidt School of Music) or the Zach Curlin Garage (505 Zach Curlin) and access the shuttles, which will begin at 12:30 p.m. and run continuous routes until one hour after the game concludes.
- Drop-off and Pick-up location at the Stadium will be located at the Coca-Plant Office at 499 S. Hollywood

Off-Site Parking Locations

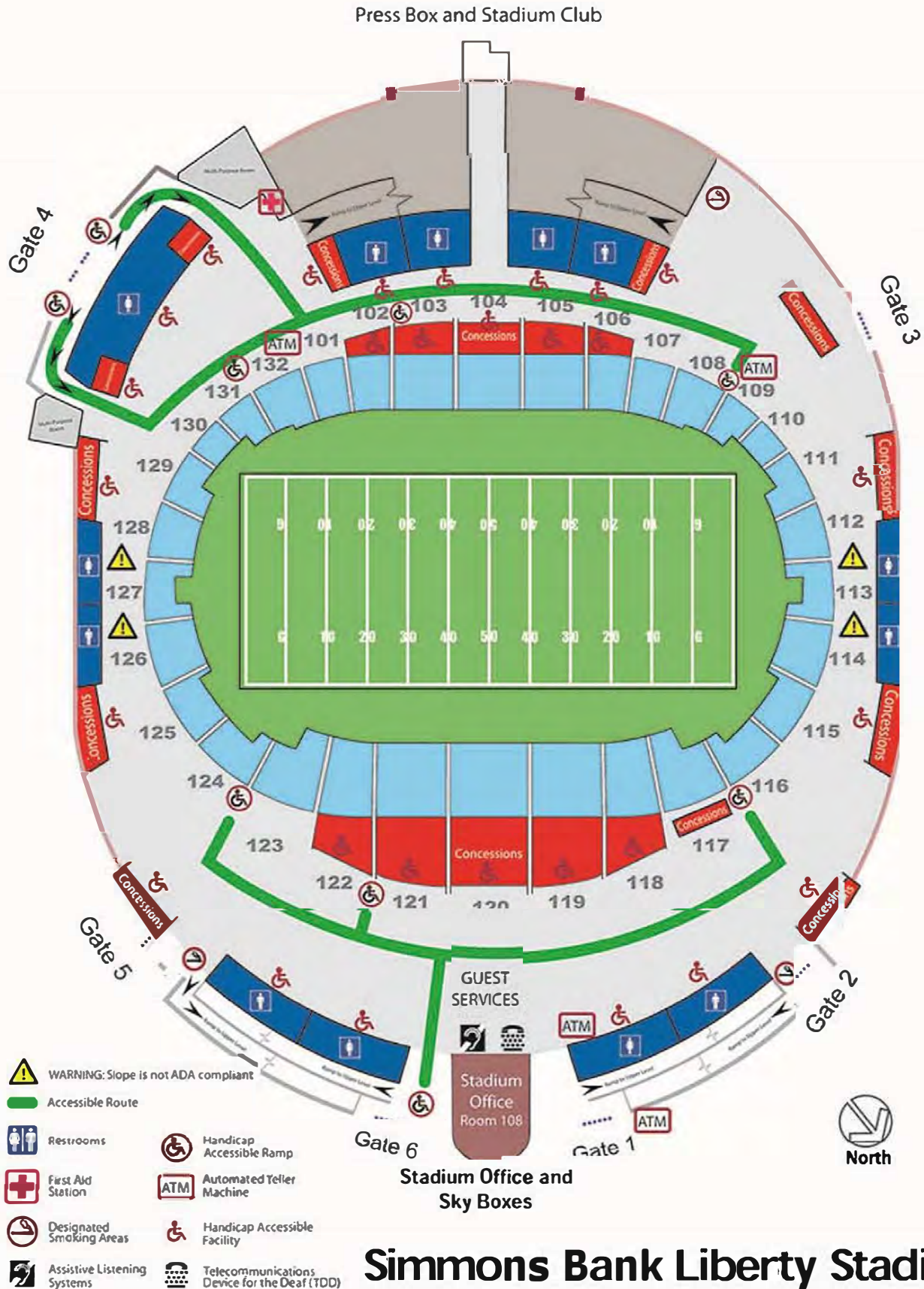
- Coca-Cola Lot, entrance on S. Hollywood Street just north of Southern Avenue
 - Opens at 10am, Tailgating NOT permitted
 - \$20 cash or credit, per space
 - RVs and Buses are permitted, must pay per space used
- Tobey Park, entrances on Central Avenue and S. Hollywood Street
 - Opens at 10am, Tailgating permitted
 - \$20 cash or credit, per space
 - RVs and Buses are NOT permitted
- Avery Armory Lot, entrance located on Avery Avenue
 - Opens at 10am, Tailgating permitted
 - \$20 cash or credit, per space
 - RVs and Buses are NOT permitted
- Christian Brothers University, lot entrance at Central Ave. and Early Maxwell.
 - Opens at 11:00am, Tailgating permitted
 - \$20 cash-only, per space
 - RVs and Buses are NOT permitted
- Middle College School, lot entrances on Central between East Parkway and Early Maxwell
 - Opens at 12:00pm, Tailgating NOT permitted
 - \$20 cash-only, per space
 - RVs and Buses are NOT permitted
- Shelby County School Board, lot entrance at 160 South Hollywood St
 - Opens at 10:00am, Tailgating NOT permitted
 - \$20 cash-only, per space
 - RVs and Buses are NOT permitted

SECTION MAP



Simmons Bank Liberty Stadium

CIRCULATION MAP



Simmons Bank Liberty Stadium



PROHIBITED ITEMS

Guests to the Simmons Bank Liberty Stadium are prohibited from entering the stadium with the following:

- Bags not compliant with the stadium's Clear Bag Policy (small clutches & purses permitted, 5"x7"; clear bags & totes only, 12" x 6" x 12" maximum size). Please See Clear Bag Policy
- Briefcases, luggage of any kind, computer bags, camera/video recorder bags
- Seat Cushions larger than a single seat (a maximum of 18" wide, 12" deep with arms)
- Baby Strollers
- Umbrellas
- Cameras with lens greater than 12" and audio or audio/visual recording devices
- Laptop computers, televisions or any electronic device that may interfere with technology related services provided by the stadium or for its use
- Drones or Remote Controlled Model Aircraft (RCMA)
- Laser pens or laser products of any type
- Air horns or any other artificial noise makers other than those approved by the playing teams or their respective conferences
- Animals (excluding service animals, those approved for shows, entertainment, etc.)
- Outside food or beverages of any kind (alcoholic beverages included) except for medical or infant needs
- Coolers/Ice Chests
- Glass, plastic, aluminum & liquid containers
- Balloons, confetti, glitter, objectionable banners or device that may interfere with and/or distract any sports or event participant or stadium guest
- Mask or costumes other than those in support of the playing teams excluding any Stadium Management approved themed events
- Projectiles of any type including frisbees, baseballs and beach balls
- Poles or sticks
- Fireworks or other explosives
- Weapons of any type, including guns and knives
- Any other item deemed unacceptable by Stadium Management

In the event any of these items are revealed during a search, guests must dispose of the items or return the prohibited item to their vehicle prior to entry. If you have any questions, please contact the Stadium Office at 901.729.4344 prior to the event.

CLEAR BAG POLICY



To provide a safer environment for the public and significantly expedite guest entry into the stadium, Simmons Bank Liberty Stadium will implement a new bag policy in 2017-18 for **all ticketed Stadium events** that limits the size and type of bags that may be brought into the venue.

Guests will be able to carry the following style and size bag, package or container into the venue:

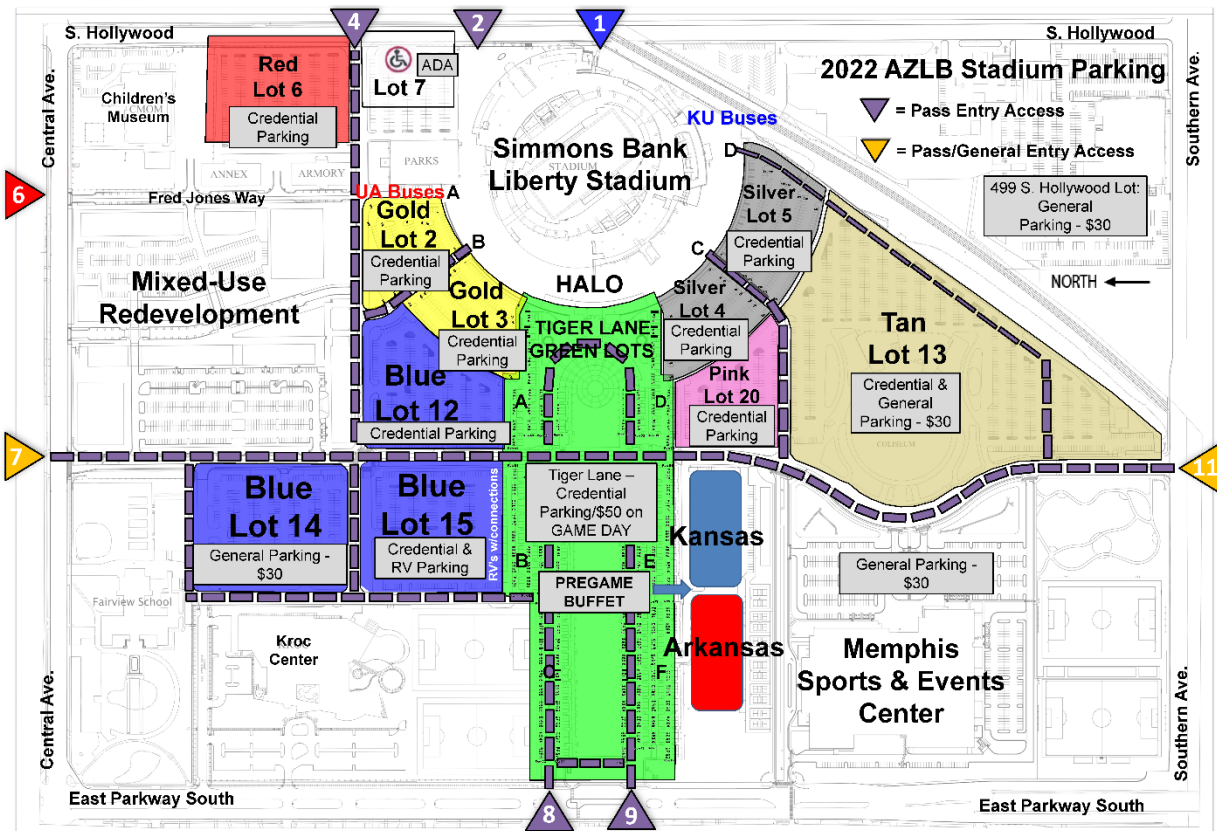
- Bags that are clear plastic, vinyl or PVC and do not exceed 12" x 6" x 12."
- One-gallon clear plastic freezer bag (Ziploc bag or similar).
- Small clutch bags, approximately the size of a hand, with or without a handle or strap can be taken into the venue with one of the clear plastic bags.
- An exception will be made for medically necessary items after proper inspection.

Prohibited bags include, but are not limited to: purses larger than a clutch bag, briefcases, backpacks, fanny packs, cinch bags, luggage of any kind, non-approved seat cushions or seatbacks * (see below) computer bags, diaper bags, binocular cases, and camera bags.

Guests will continue to be able to enjoy their tailgate activities in the parking lots and to do so with greater safety and the knowledge that their entry into the venue will be smoother and faster. They also will continue to be able to carry items allowed into the venue, such as binoculars, cameras, and smart phones.

**Non-approved seat cushions and seatbacks include large traditional seat cushions that have pockets, zippers, compartments, or covers. Seat cushions and seatbacks must be 18" or less in width with no armrests.*

STADIUM PARKING MAP



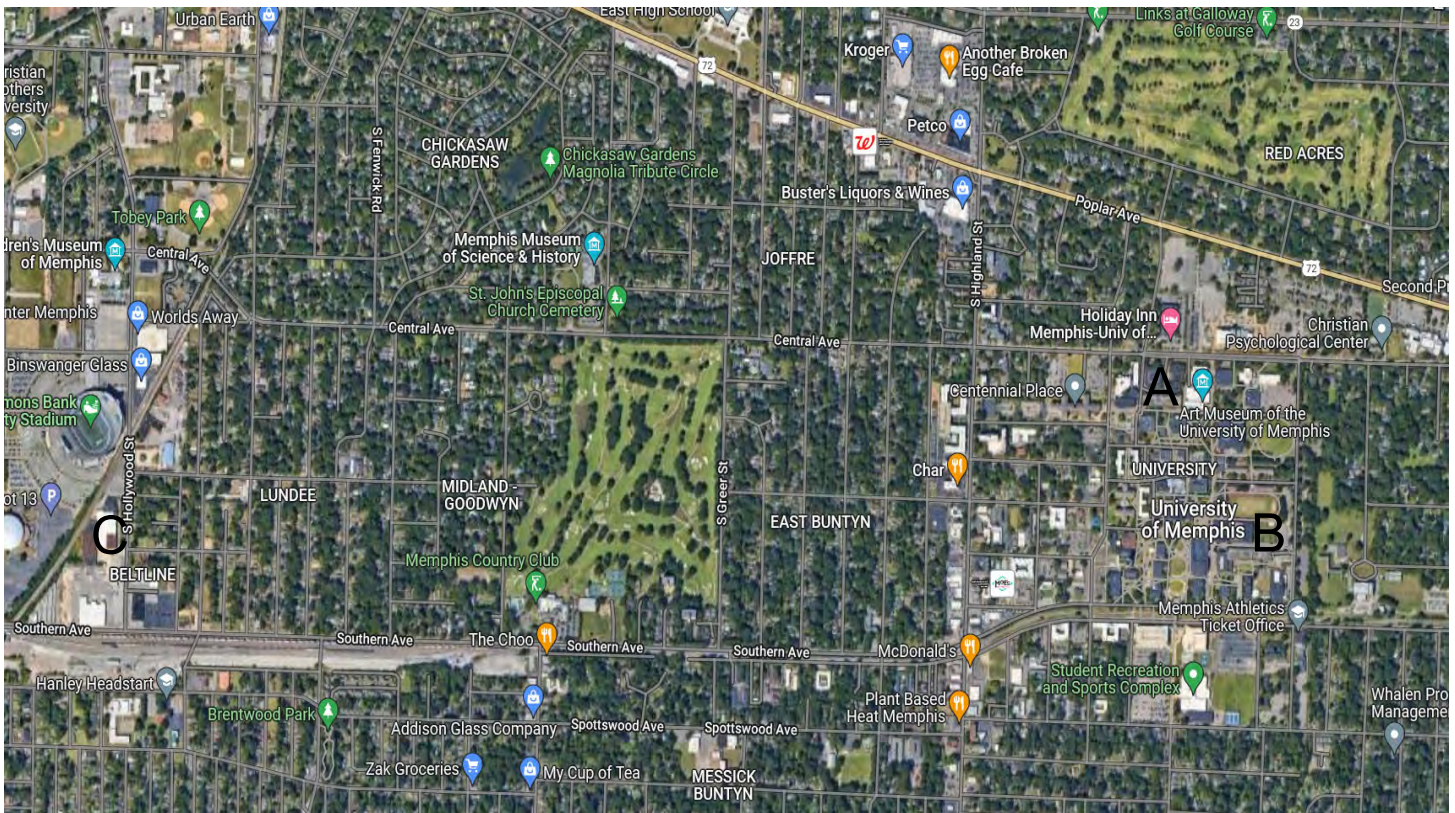
ALL LOTS OPEN AT 9AM ON DECEMBER 28, 2022

Entry Points

- Red, Gold and ADA Lots best to use Access 4 on Hollywood
- Blue and RV Lots best to use Access 7 on Central
- Tiger Lane best to use Access 8 or 9 on East Parkway
- Pink, Silver and Tan Lots best to use Access 11 on Southern Avenue
- Credential/Parking Pass Holders PLEASE look at the back of your pass!

General Parking Sales

- Cash or Credit
- Enter at Access 7 (Central & Early Maxwell) or Access 11 (Southern & Early Maxwell)
- \$50 for Tiger Lane
- \$30 for Blue Lot 14, Tan Lot and Sports Center Lot
- RVs and Buses are \$100



1000 ft

PARK-N-RIDE SHUTTLE SERVICE

Shuttles would depart UofM and travel Central Ave. to Goodwyn, Goodwyn to Midland, and Midland to S. Hollywood St.

Parking/Pick-Up:

A: UofM Central Lot (3750 Central Ave.)

B: UofM Zach Curlin Garage (505 Zach Curlin)

Drop-Off/Return:

C: Coca-Cola Bottling Plant/Drop-off & Pick-Up Location



500 ft

OFF CAMPUS LOT LOCATIONS

- A: 499 S. Hollywood Lot
- B: Tobey Park
- C: Shelby County School Board
- D: Christian Brothers University
- E: Middle College School
- F: Avery Armory Lot